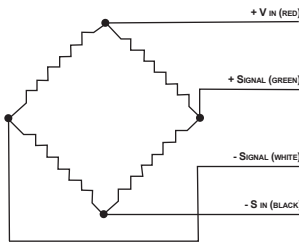
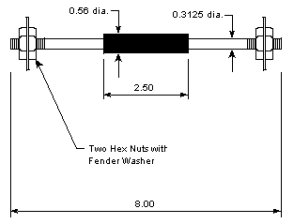
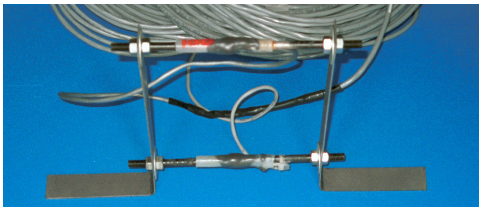


# Concrete Strain Gages

SERVICE | *at-a-glance*



## General Specifications

Bridge Completion .....	Full bridge, no completion required
Gage Resistance .....	350 Ohm
Excitation .....	up to 10 Volts
Output .....	≈ 2 mV/V @ 1500 μstrain
Calibration Factor .....	Individually provided
Grid Area .....	0.133cm <sup>2</sup>
Gage Area .....	1.22 cm <sup>2</sup> overall
Fatigue Life .....	<10 <sup>5</sup> repetitions @ +/- 1500 μstrain
Cell Material .....	Steel 5/16-in. diameter with 5/16-in. x 18 threaded ends
Coating .....	Two-part polysulfide liquid polymer, encapsulated in silicone with butyl rubber outer core

## Quality Assurance

Temperature.....	-34°C (-30°F) to 204°C (400°F)
Lead Wire .....	30 ft of 22 AWG shielded, twisted-pair four wire

## Background Information

CTLGroup's Concrete Strain Gages feature a field-proven design that uses durable materials to ensure accurate long-term data collection. Its full-bridge configuration reduces costs by eliminating the need for expensive data-acquisition and signal-conditioning systems to provide bridge completion. Shielded, twisted-pair design protects the lead wire from electrical noise. This all leads to longer sensor life and long-term savings, by reducing redundancy in your instrumentation plan.

## HEADQUARTERS | LABORATORIES

847.965.7500  
5400 Old Orchard Road  
Skokie, IL 60077

## AUSTIN TX OFFICE

512.219.4075

## NAPERVILLE IL OFFICE

630.995.3949

CREATIVE SOLUTIONS TO COMPLEX PROBLEMS

IN ENGINEERING AND MATERIALS SCIENCE